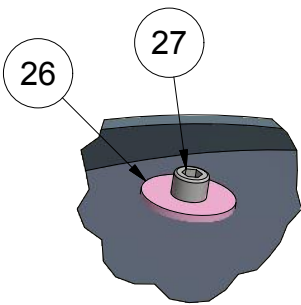
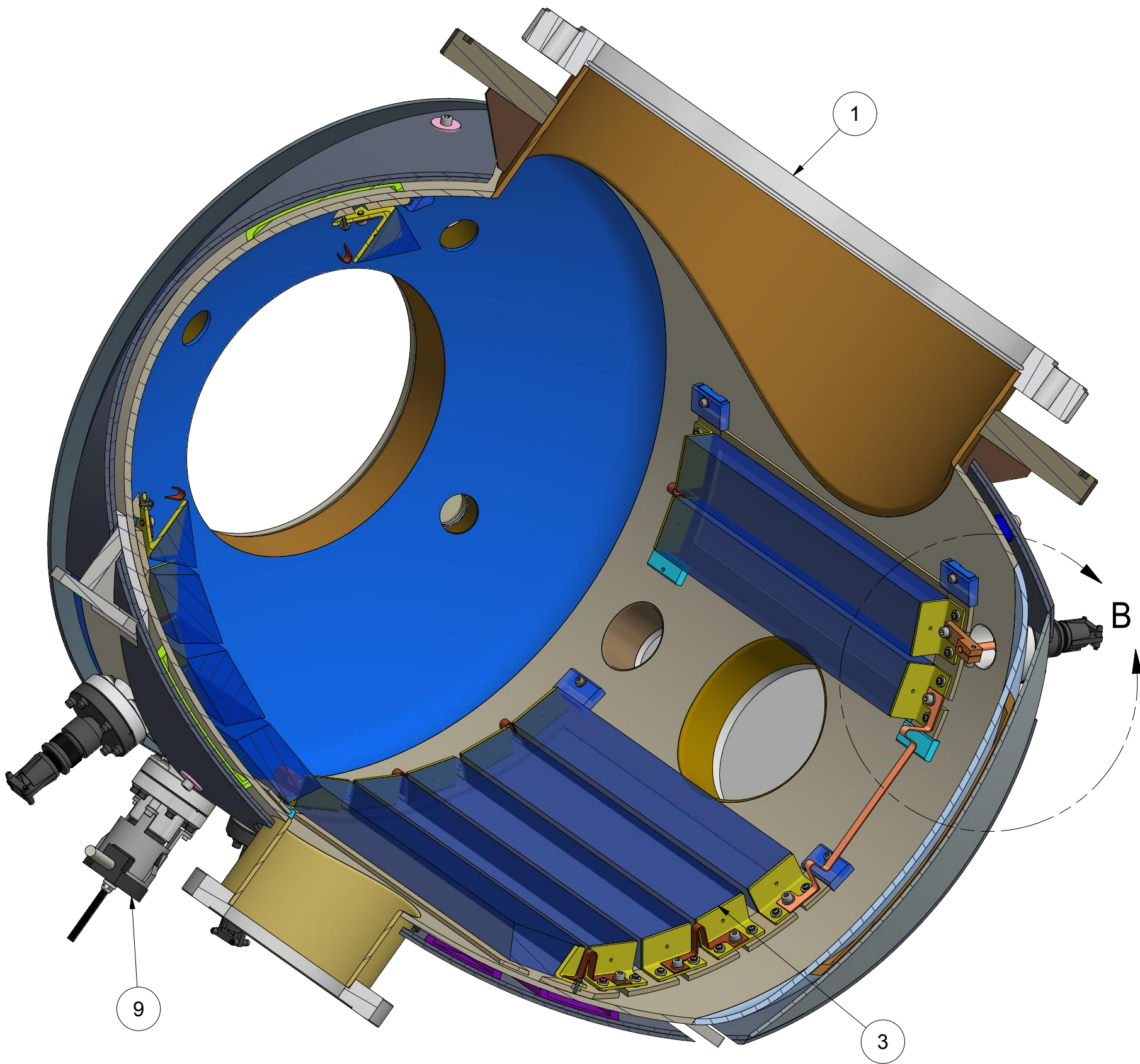
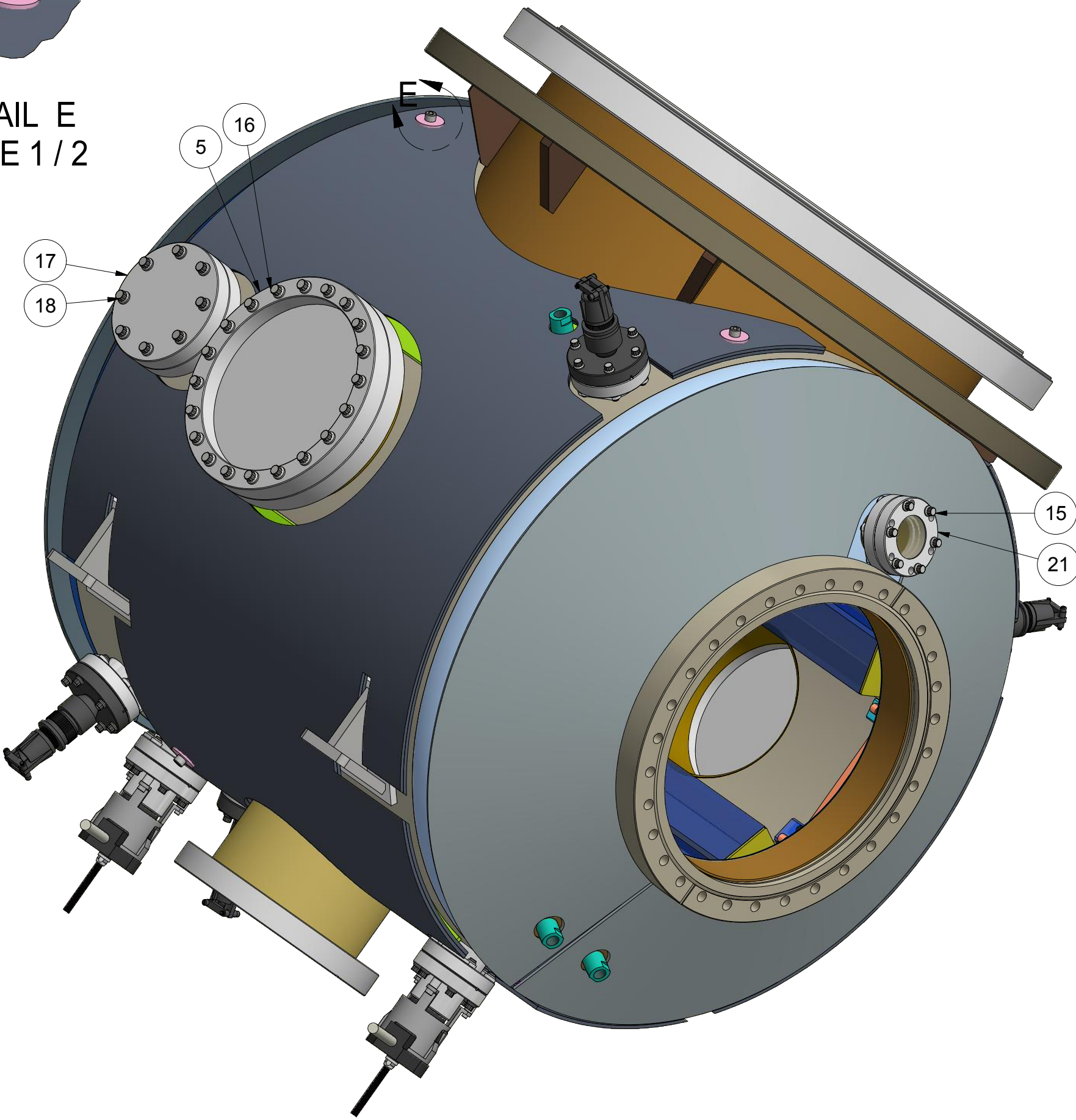


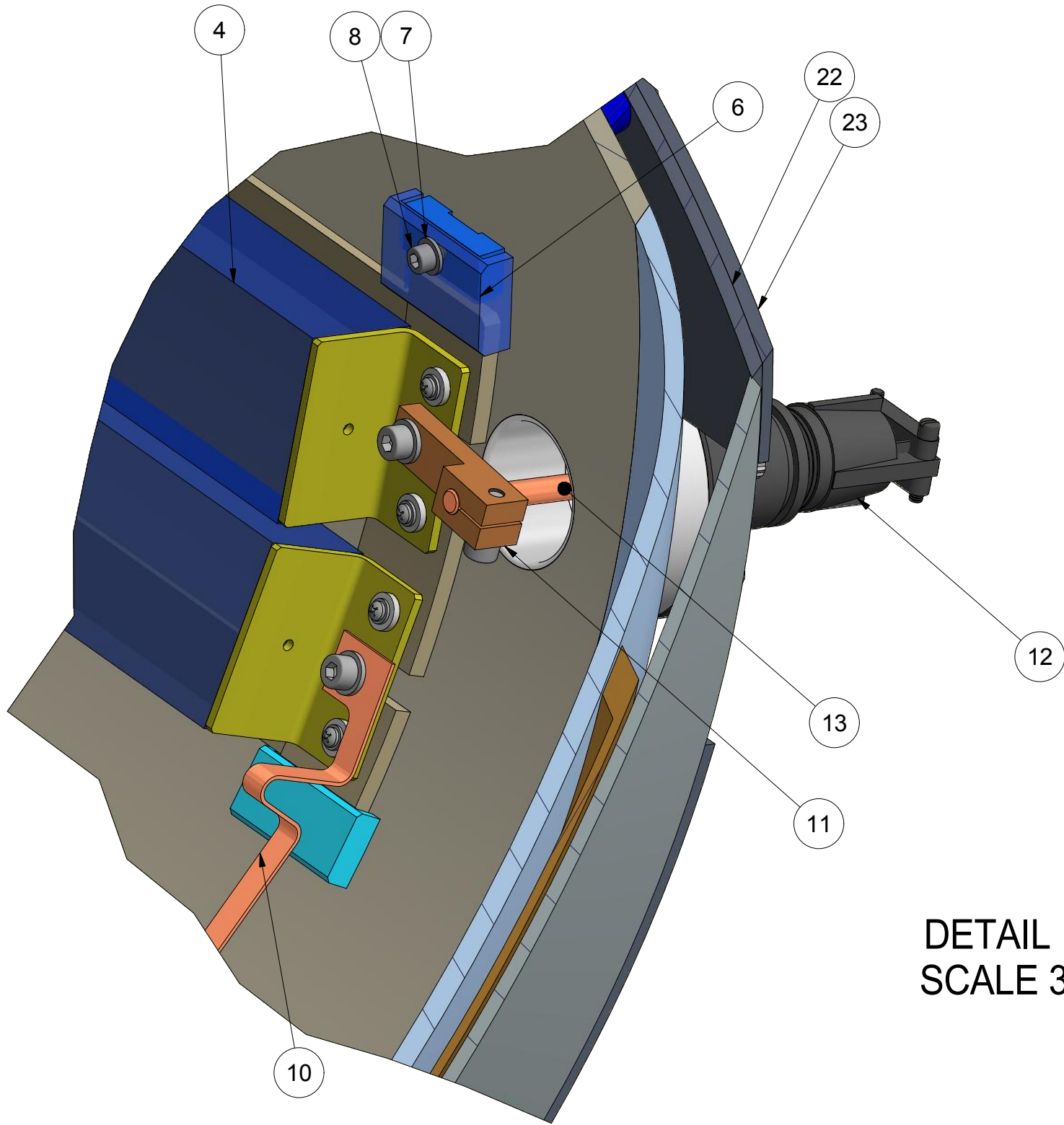
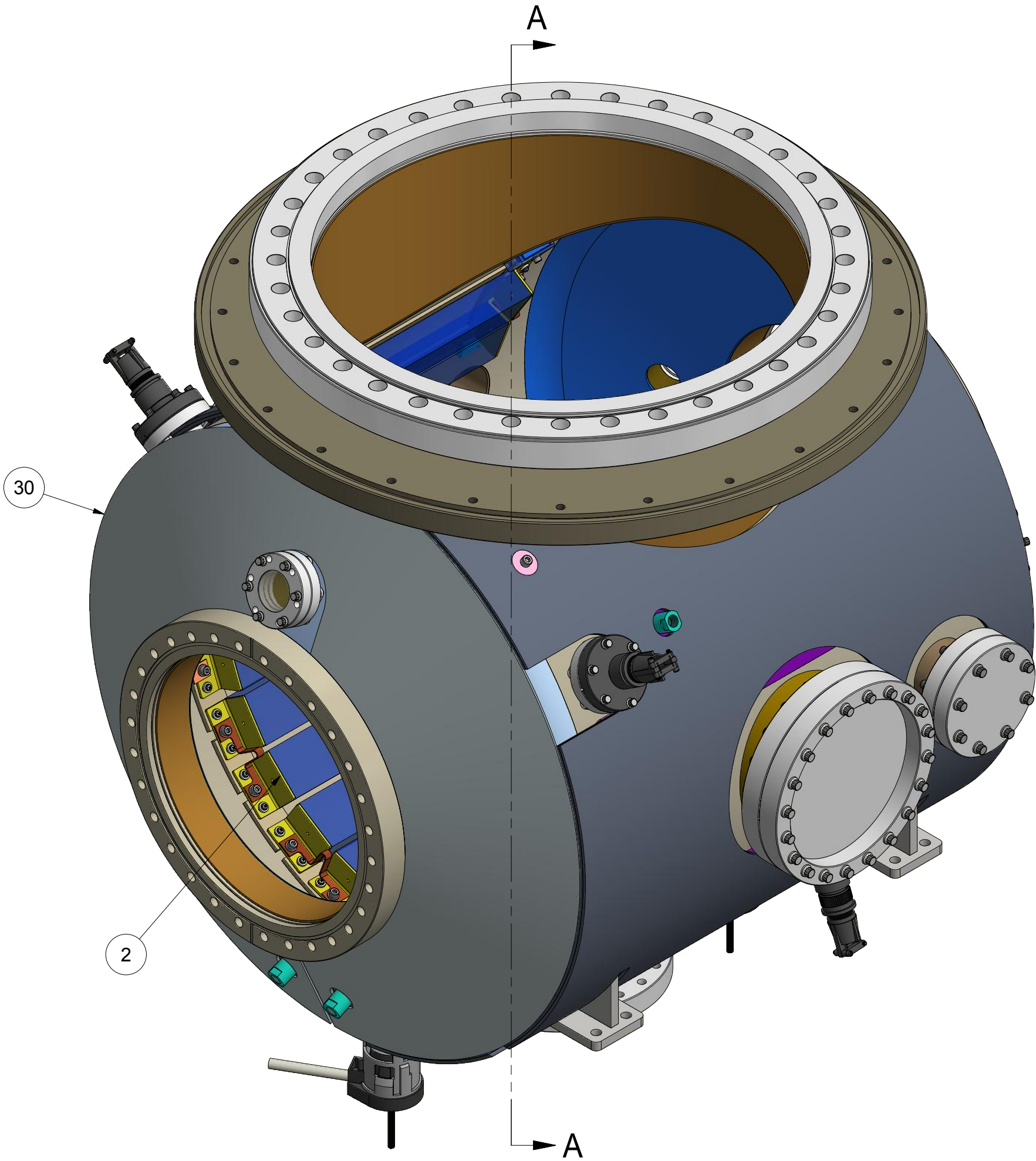
REVISIONS				
SYM.	ZONE	DESCRIPTION	DATE	APP.



DETAIL E
SCALE 1 / 2






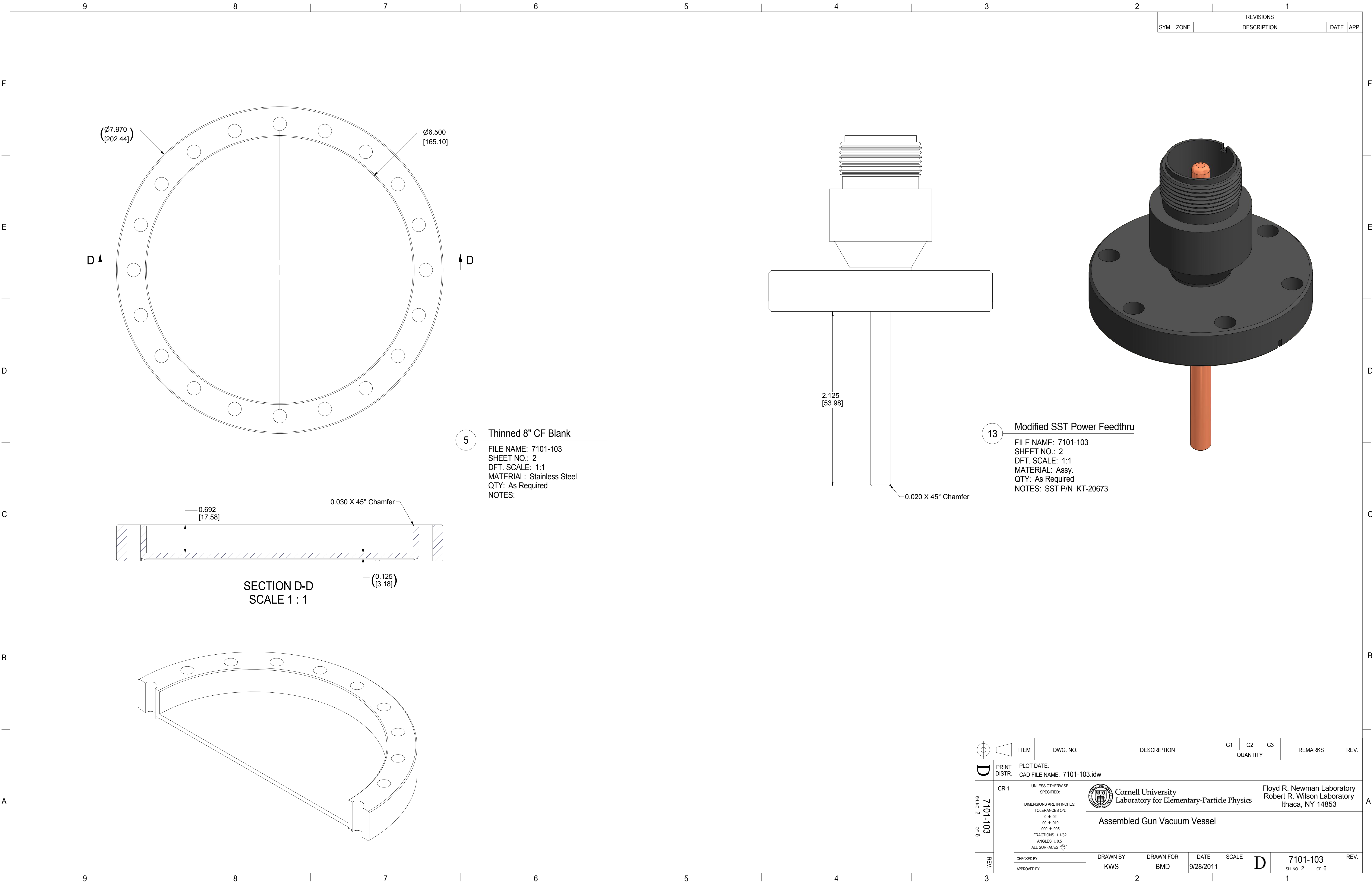
SECTION A-A
SCALE 1 / 4



DETAIL B
SCALE 3:4

31	Sheet 6	Conical Rear Lead Panel	1					
30	Sheet 6	Conical Front Lead Panel	1					
29	Sheet 5	Right Lead Panel Outer	1					
28	Sheet 4	Right Lead Panel Inner	1					
27	Purchased	SHCS 1/4-28 x 1/2"	6					
26	92217A479	1/4" Large Flat Washer	6				McMaster-Carr	
23	Sheet 5	Left Lead Panel Outer	1					
22	Sheet 4	Left Lead Panel Inner	1					
21	Purchased	2-3/4" CF Viewport	4					
20	Purchased	Hex Bolt - 3/8-24 x 0.875"	4				Solenoid Mounting	
19	Purchased	3/8 Washer	4				Solenoid Mounting	
18	Purchased	CF 4-1/2" Bolt / Plate Nut Set	2					
17	Purchased	CF 4.5" Blank	2					
16	Purchased	CF 8" Bolt / Plate Nut Set	2					
15	Purchased	CF 2-3/4" Bolt / Plate Nut Set	10					
14	7101-122	External Bucking Solenoid	1				Not Shown	
13	Sheet 2	Power Feedthru FA206731 MODIFIED	4				SST	
12	Purchased	FP20105 Connector	4				SST	
11	7101-121 Sh. 7	Feedthru NEG Clamp Assy (item 20)	4					
10	7101-121 Sh. 6	Long Jumper Assy (item 16)	2					
9	Purchased	IE 514 Extractor Gauge Head	2				Leybild Vacuum	
8	Purchased	SHCS 8-32 x 5/16	8					
7	Purchased	Plain Washer No. 8	8					
6	Sheet 3	NEG Module Locating Clamp	8					
5	Sheet 2	CF 8" Thinned Blank	2					
4	7101-121	2 NEG Module	2					
3	7101-121	5 NEG Module LH	1					
2	7101-121	5 NEG Module RH	1					
1	7101-101	Gun Vacuum Chamber	1					


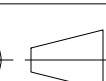
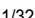

		ITEM		DWG. NO.		DESCRIPTION		G1		G2		G3		REMARKS		REV.					
								QUANTITY													
D		PRINT DISTR.		PLOT DATE: CAD FILE NAME: 7101-103.idw																	
7101-103 SH. NO. 1 OF 6		CR-1		UNLESS OTHERWISE SPECIFIED: DIMENSIONS ARE IN INCHES: TOLERANCES ON: 0 ± .02 .00 ± .010 .000 ± .005 FRACTIONS ± 1/32 ANGLES ± 0.5° ALL SURFACES 		 Cornell University Laboratory for Elementary-Particle Physics								Floyd R. Newman Laboratory Robert R. Wilson Laboratory Ithaca, NY 14853							
		Assembled Gun Vacuum Vessel																			
REV.		CHECKED BY:		DRAWN BY KWS		DRAWN FOR BMD		DATE 9/28/2011		SCALE		D		7101-103 SH. NO. 1 OF 6		REV.					
		APPROVED BY:																			

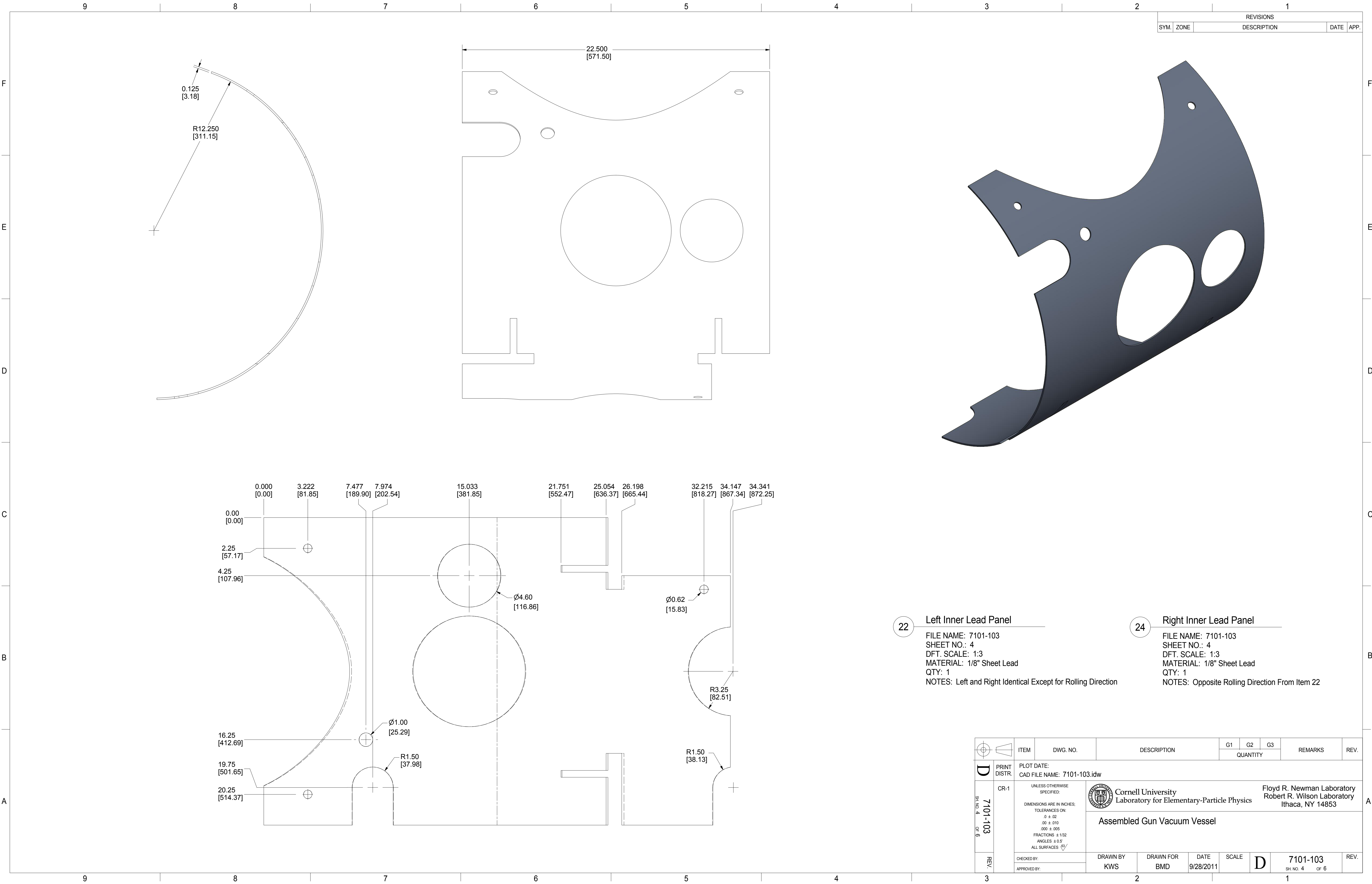


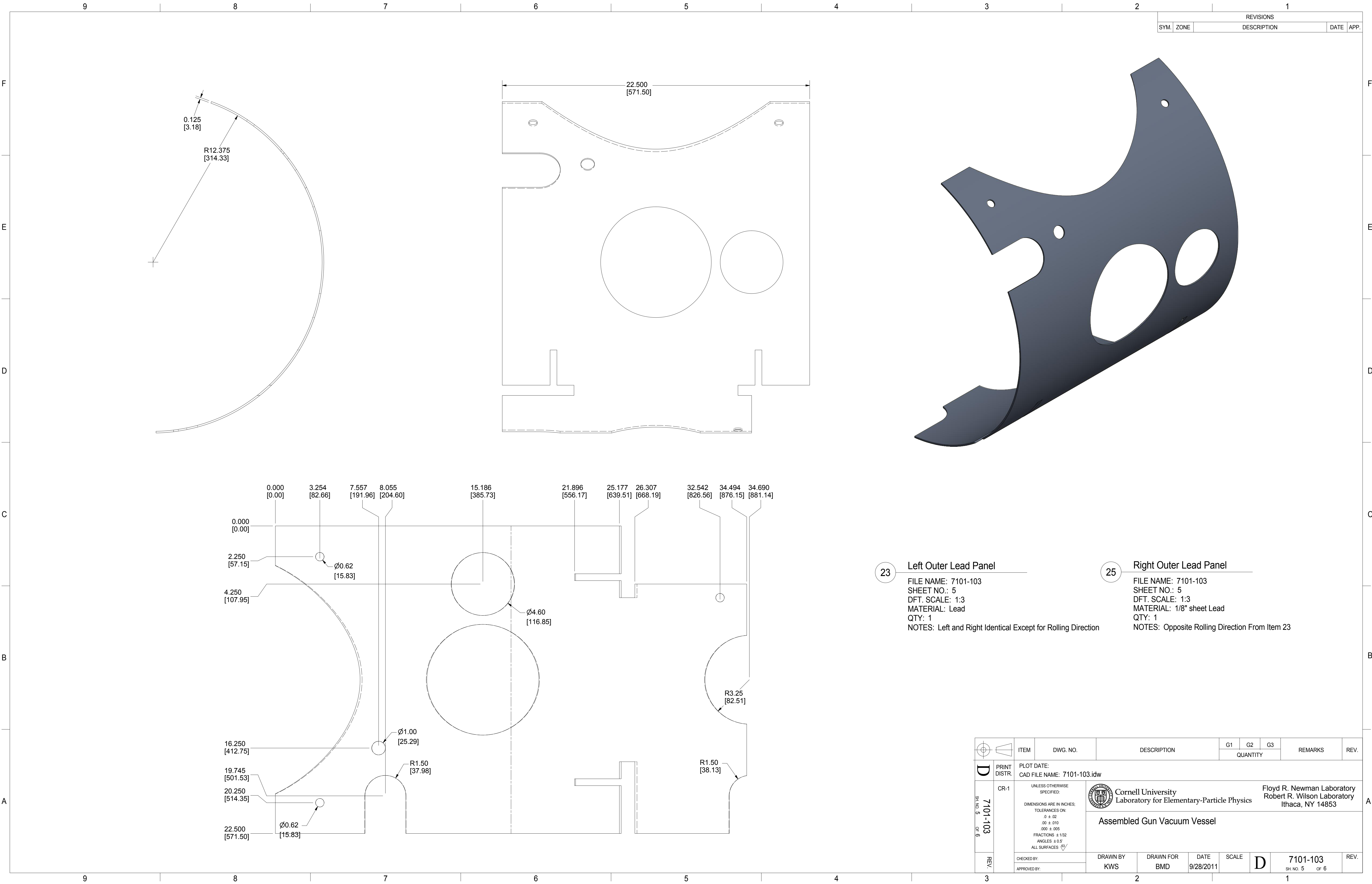
REVISIONS			
SYM.	ZONE	DESCRIPTION	DATE APP.

13 Modified SST Power Feedthru

FILE NAME: 7101-103
SHEET NO.: 2
DFT. SCALE: 1:1
MATERIAL: Assy.
QTY: As Required
NOTES: SST P/N KT-20673

 		ITEM		DWG. NO.		DESCRIPTION			G1		G2		G3		REMARKS		REV.				
									QUANTITY												
D		PRINT DISTR.		PLOT DATE: CAD FILE NAME: 7101-103.idw																	
7101-103 SH. NO. 2 OF 6		CR-1		UNLESS OTHERWISE SPECIFIED: DIMENSIONS ARE IN INCHES; TOLERANCES ON: .0 ± .02 .00 ± .010 .000 ± .005 FRACTIONS ± 1/32 ANGLES ± 0.5° ALL SURFACES 		 Cornell University Laboratory for Elementary-Particle Physics										Floyd R. Newman Laboratory Robert R. Wilson Laboratory Ithaca, NY 14853					
						Assembled Gun Vacuum Vessel															
REV.		CHECKED BY:		DRAWN BY KWS		DRAWN FOR BMD		DATE 9/28/2011		SCALE		D		7101-103 SH. NO. 2 OF 6		REV.					
		APPROVED BY:																			





REVISIONS			
SYM.	ZONE	DESCRIPTION	DATE APP.





- 23

Left Outer Lead Panel

FILE NAME: 7101-103
SHEET NO.: 5
DFT. SCALE: 1:3
MATERIAL: Lead
QTY: 1
NOTES: Left and Right Identical Except for Rolling Direction
- 25

Right Outer Lead Panel

FILE NAME: 7101-103
SHEET NO.: 5
DFT. SCALE: 1:3
MATERIAL: 1/8" sheet Lead
QTY: 1
NOTES: Opposite Rolling Direction From Item 23

 		ITEM	DWG. NO.	DESCRIPTION			G1	G2	G3	REMARKS	REV.
						QUANTITY					
D	PRINT DISTR.	PLOT DATE: CAD FILE NAME: 7101-103.idw									
	CR-1	<div>UNLESS OTHERWISE SPECIFIED: DIMENSIONS ARE IN INCHES; TOLERANCES ON: .0 ± .02 .00 ± .010 .000 ± .005 FRACTIONS ± 1/32 ANGLES ± 0.5° ALL SURFACES </div>			<div>Cornell University Laboratory for Elementary-Particle Physics</div>				<div>Floyd R. Newman Laboratory Robert R. Wilson Laboratory Ithaca, NY 14853</div>		
SH. NO. 5 OF 6	7101-103	Assembled Gun Vacuum Vessel									
	REV.	CHECKED BY:	DRAWN BY KWS	DRAWN FOR BMD	DATE 9/28/2011	SCALE	D	7101-103 SH. NO. 5 OF 6		REV.	
		APPROVED BY:									

